

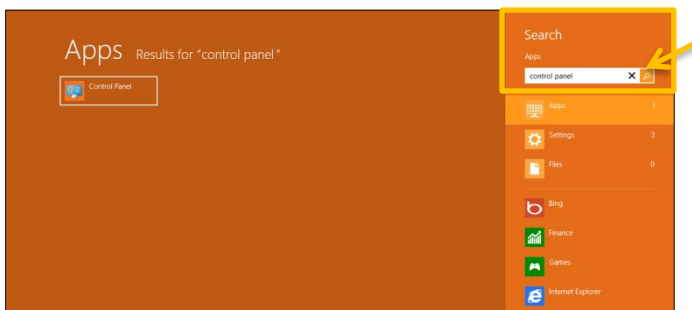
1. From the *Start* screen, place the mouse cursor in the bottom right corner.



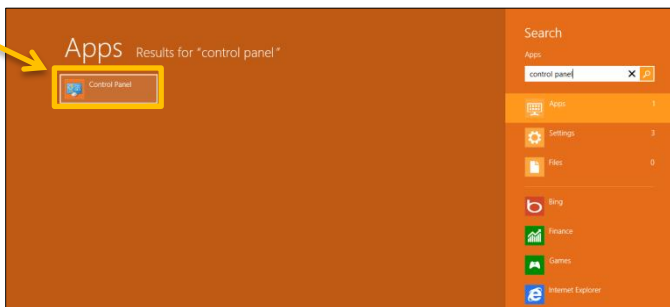
2. The *Charms bar* appears. Click **Search**.



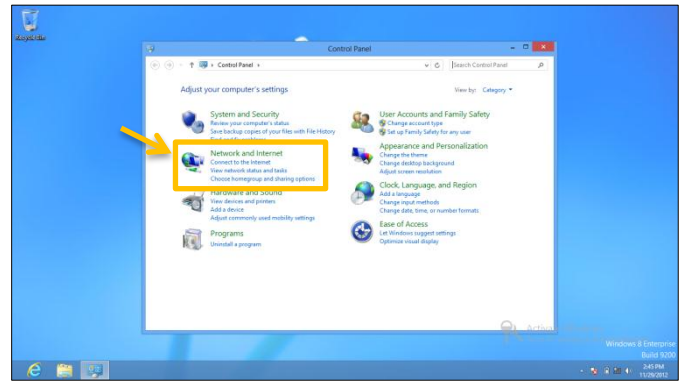
3. The *Search Apps* screen appears. Enter **Control Panel** and click the *Magnifier* icon.



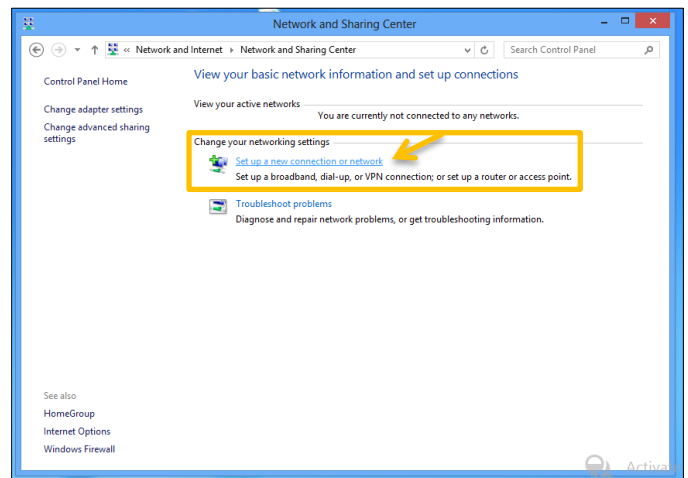
4. Click the **Control Panel** link which appears on the left side of the screen.



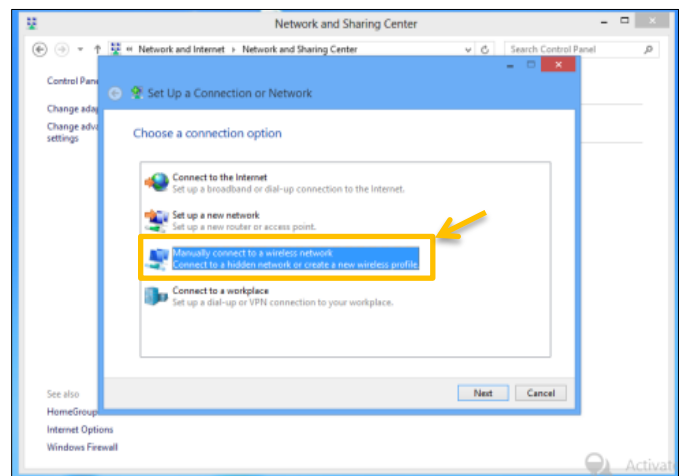
5. The *Control Panel* appears. Click **View Network Status and Tasks** under *Network and Internet*.



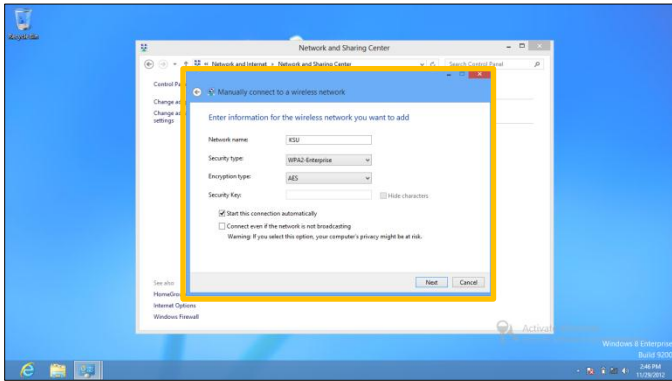
6. The *Network and Sharing Center* appears. Click the **Set up a new connection or network link**.



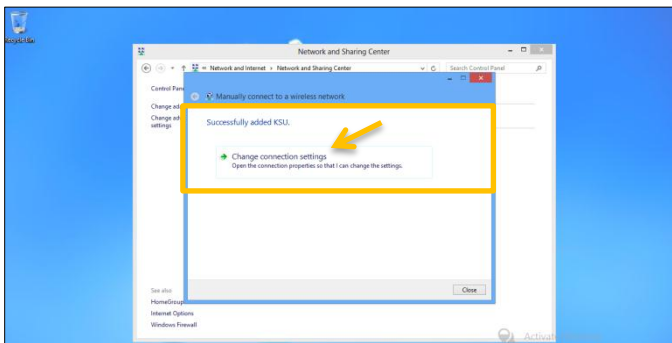
7. The *Set Up a Connection or Network* window appears. Click **Manually connect to a wireless network**.



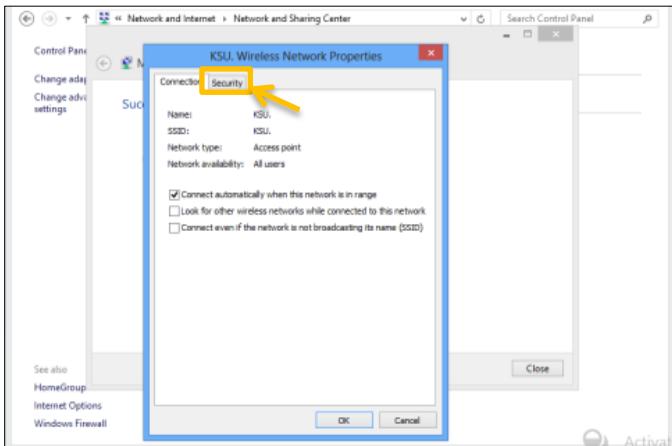
8. The *Manually connect to a wireless network* window appears. Enter the following information, and then click **Next**.
 - a. **Network Name:** *KSU*
 - b. **Security Type:** *WPA2-Enterprise*
 - c. **Encryption Type:** *AES*
 - d. **Security Key:** *Leave blank*



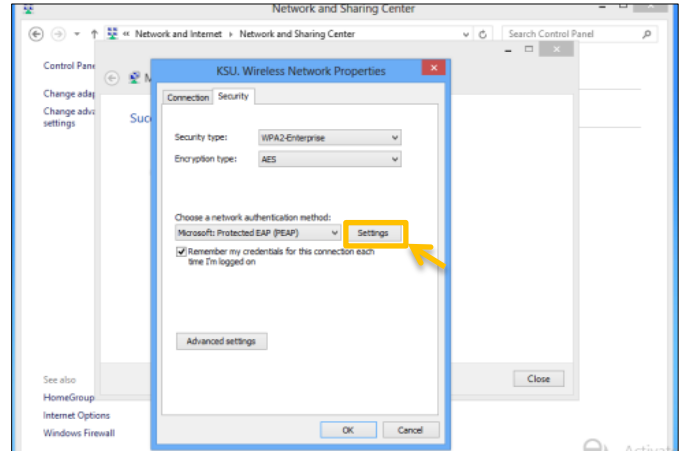
9. The *Successfully added KSU.* message appears. Click **Change connection settings**.



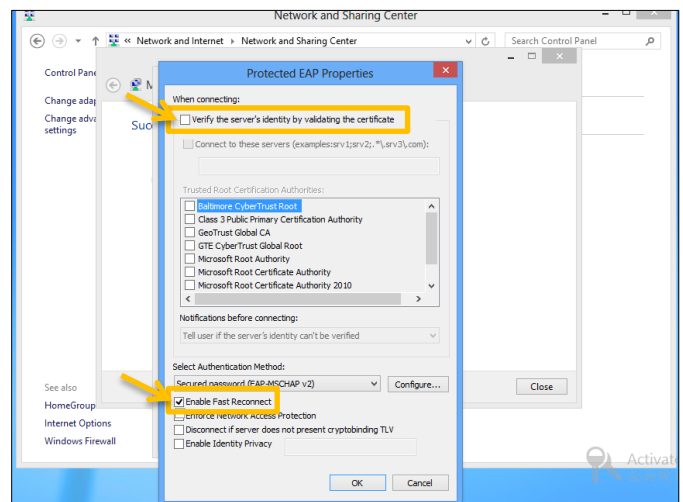
10. The *KSU Wireless Network Properties* window appears. Click the **Security** tab.



11. Click the **Settings** button.

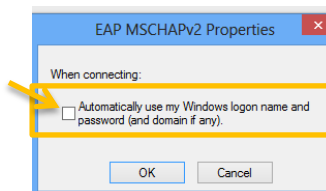


12. The *Protected EAP Properties* window appears. Uncheck both **Verify the server's identity by validating the certificate** and **Enable Fast Reconnect**.



13. Click the **Configure** button under *Select Authentication Method*.

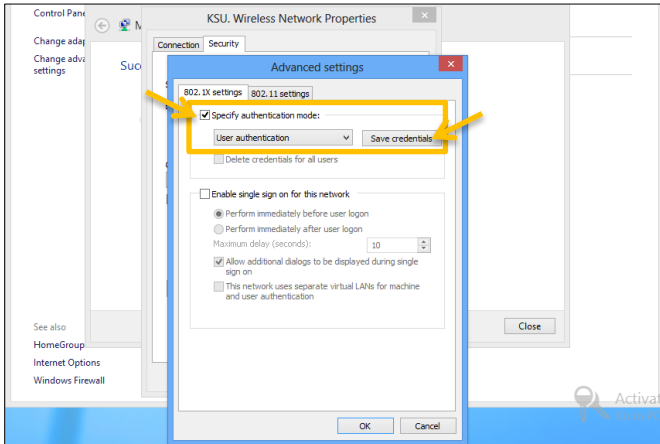
14. The *EAP MSCHAPv2 Properties* window appears. Verify that **Automatically use my Windows logon name and password (and domain if any)** is unchecked. Click **OK**.



15. Click **OK** to close the *Protected EAP Properties* window.

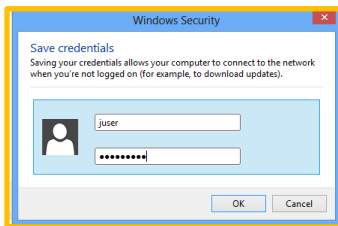
16. Click **Advanced settings** on the *KSU Wireless Network Properties* window.

17. The *Advanced settings* window appears. Check **Specify authentication mode** and select **User authentication** from the drop-down list under *Specify authentication mode*.



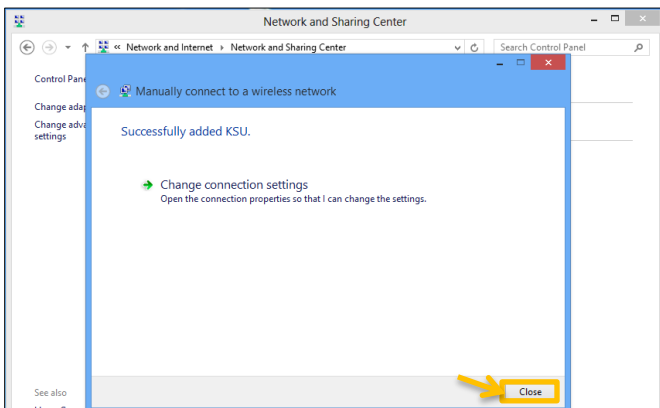
18. Click the **Save credentials** button.

19. The *Windows Security* window appears. Enter your **NetID** and **NetID password**. Click **OK**.

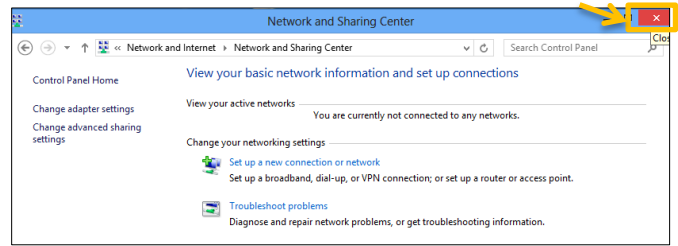


20. Click **OK** to close the *Advanced settings* and the *KSU Wireless Network Properties* windows.

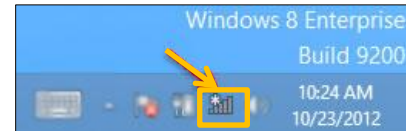
21. Click **Close** when the *Manually connect to a wireless network* window appears.



22. Close the *Network and Sharing Center* window.



23. Click the **WiFi icon** on the taskbar.



24. The *Networks* screen appears. Click **KSU**.



25. Check **Connect automatically** and click **Connect**.



26. The *Windows can't verify the server's identity* screen appears. Click **Connect**.



27. You are now connected to **KSU WiFi**.