

WiFi Instructions for BlackBerry SmartPhones

This page provides set up instructions for connecting to the Kennesaw State University WiFi Network using a Blackberry mobile device. Please see the [list of Blackberry devices¹](#) that support Wi-Fi connections.

NOTE: Preliminary research shows that you may need to **export** the KSU-required CA certificate from your laptop or desktop computer and **import** the CA certificate to the device using the Blackberry Desktop Manager "Security Certificate Sync" tool. Please refer to the instructions on page 4 of this guide.

WiFi Set Up on Blackberry

To manually add a Wi-Fi network, complete the following steps from your Blackberry device:

1. Click **Set Up**, then **Wi-Fi** (or click **Manage Connections** and then **Setup Wi -Fi Network**).

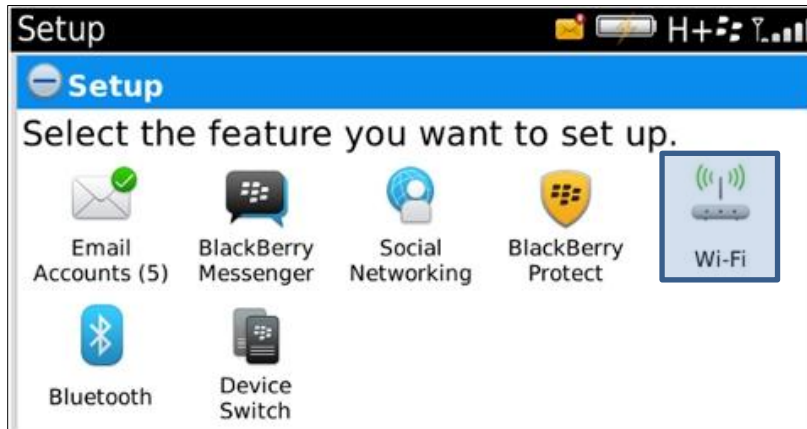


Figure 1 - Setup

2. If prompted, click on **Next** on the **Welcome to WI-FI Setup** screen.
3. Select **Other Ways to Connect**.
4. Select **Manually Connect to Network**.

¹ http://us.blackberry.com/ataglance/networks/#tab_ddetail_subtab_wifi



Figure 2 - Other ways to connect

5. Type the network name or Service Set Identifier (SSID) "KSU".



Figure 3 - Manually Connect to Network – KSU SSID

6. Click **Next**.
7. From the **Security Type** menu, select **WPA/WPA2 Enterprise**.
8. Select **Enterprise Sub-Type PEAP**.

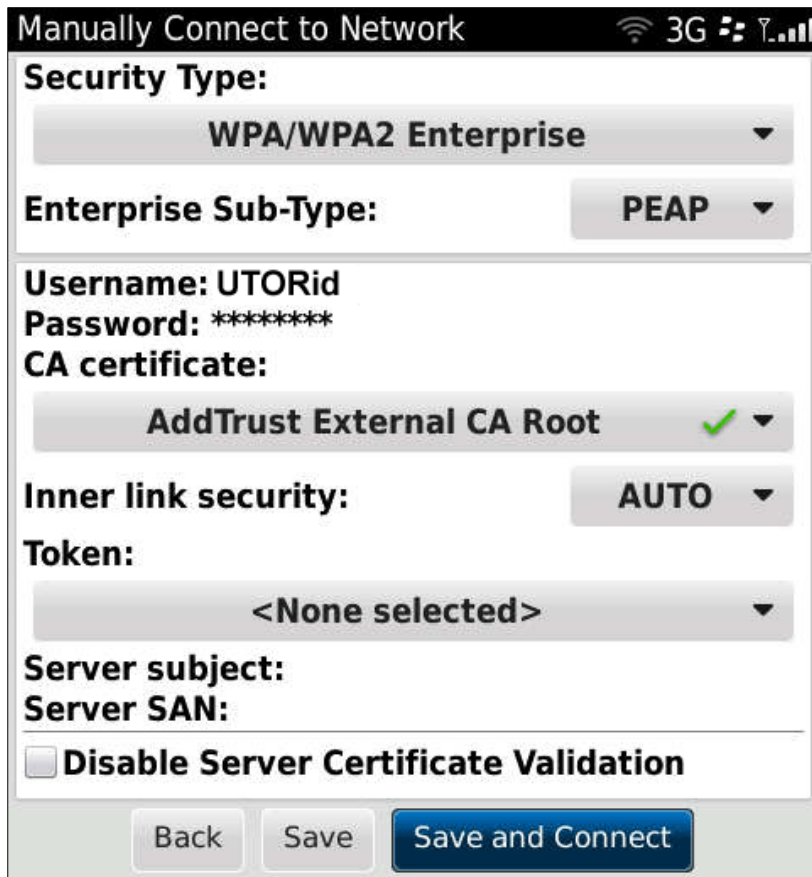


Figure 4 - Manually Connect to Network - Security Type, Credentials, and Certificate

9. Specify the required security credentials: your NetID & NetID password.
10. Specify the CA certificate: **GeoTrust Global CA**.
11. Specify Inner Link Security: **EAP-MS-CHAP v2**.
12. Click **Save and Connect** to manually add and connect to the **KSU WiFi** network.
13. To view connections status, you can access **WI-FI – DIAGNOSTICS** from the WI-FI Connections menu.

If you are unable to establish a connection to the KSU Wireless Network and you have correctly entered your NetID and NetID password, and the CA certificate selected is **GeoTrust Global CA**, you may need to **export** the KSU-required CA certificate from your laptop or desktop computer and **import** the CA certificate to the device using the Blackberry Desktop Manager-"**Security Certificate Sync**" tool.

Obtaining the KSU-required CA certificate

1. *Download* the [GeoTrust Global CA security certificate](#).
2. *Open* the **Blackberry Desktop Manager**.
3. *Click* on **Synchronize Certificates**
4. *Click* the **import** button.
5. *Find* and *select* the certificate downloaded in Step 1.
6. On the **Intermediate Certificates** tab, *check* the box for the **GeoTrust Global CA security certificate**.
7. After the certificate has been imported into the Desktop Manager, *click* the **Synchronize** button to import the certificate onto your Blackberry device.