

Turning off the Dell Wireless Utility Manager

Enabling the Windows Wireless Utility Manager

To connect to the new KSU WiFi network, the **Windows Wireless Utility Manager** must be the only program enabled to manage the laptop's wireless connections.

To turn off the Dell wireless utility manager:

1. Go to Start -> Programs
2. Go to the wireless utility manager folder, which is listed as "DW LAN" or "Dell Wireless
3. Select **Dell Wireless WLAN Card Utility**
4. **Uncheck** the box circled above for "Let this tool manage your wireless networks"
5. Click **OK**

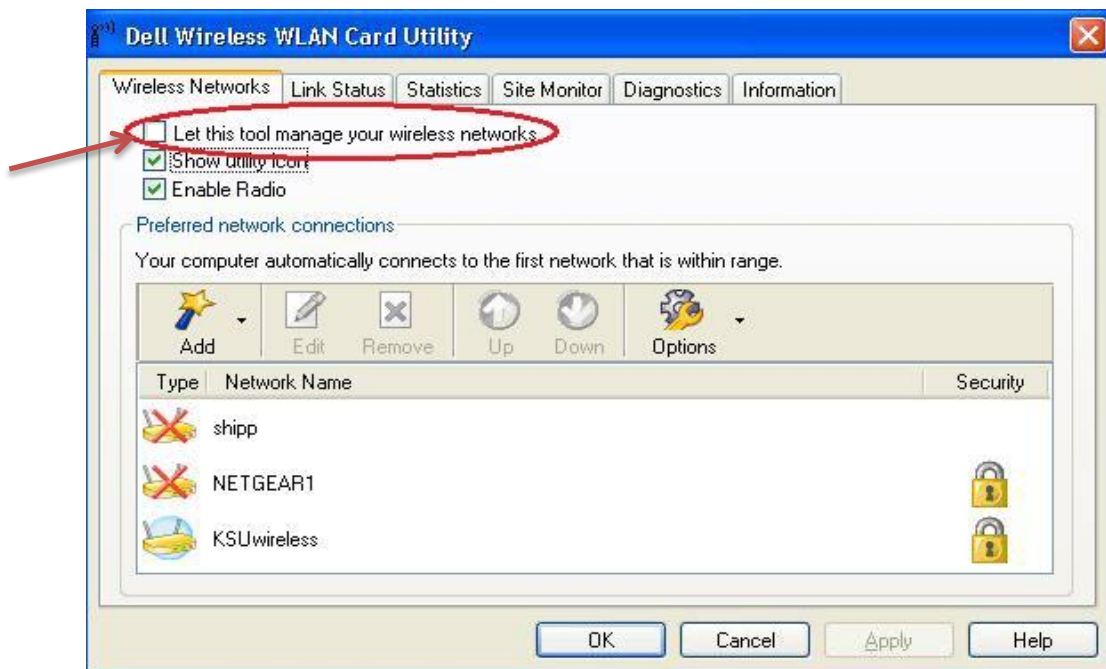


Figure 1 - Dell Wireless WLAN Card Utility

To enable the Windows wireless manager:

1. Look for the Windows wireless system tray icon to enable (the red X should disappear)
2. Click on the message box "Wireless networks detected. Click here to get connected." when it appears (after approximately 5 seconds)
3. The Windows Wireless Utility Manager is now managing the laptop's wireless connections
4. Follow the steps to connect to the KSU WiFi network found at:

<http://its.kennesaw.edu/netaccess/guides/index.html>