

Get Connected with KSU WiFi - *Vista*

Note: Windows Wireless Manager must be enabled.

KSU Service Desk

Faculty & Staff: 770-423-6999

Students: 770-499-3555

1. Click on the **Start** button.



Figure 1 - Start Button

2. Click on **Control Panel**.

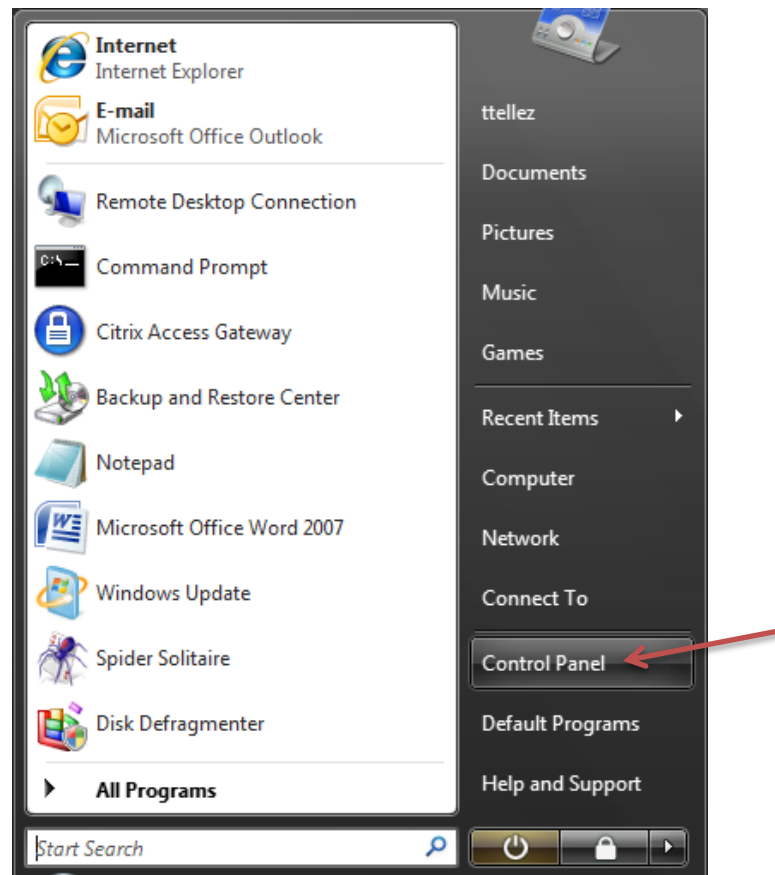


Figure 2 - Control Panel

3. Click on **Network and Sharing Center**.

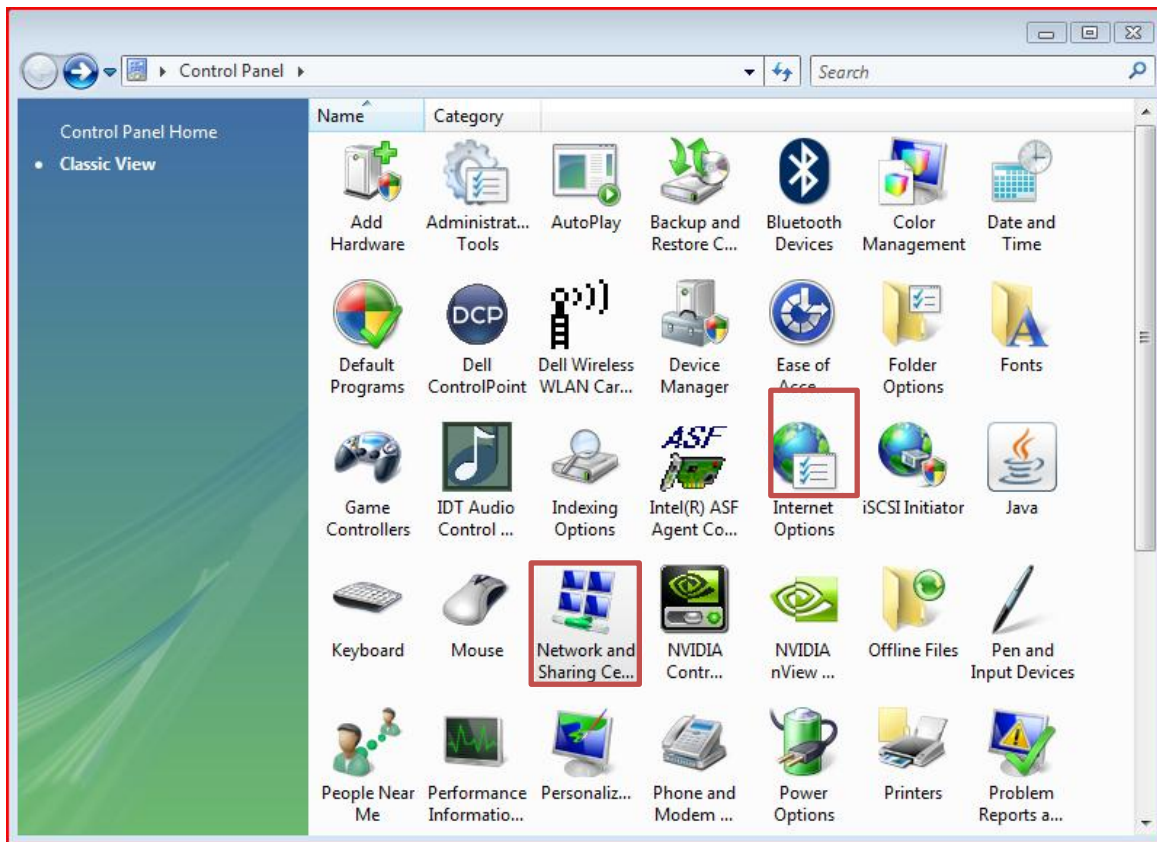


Figure 3 - Network and Sharing Center

4. Click on **Setup a connection or network.**

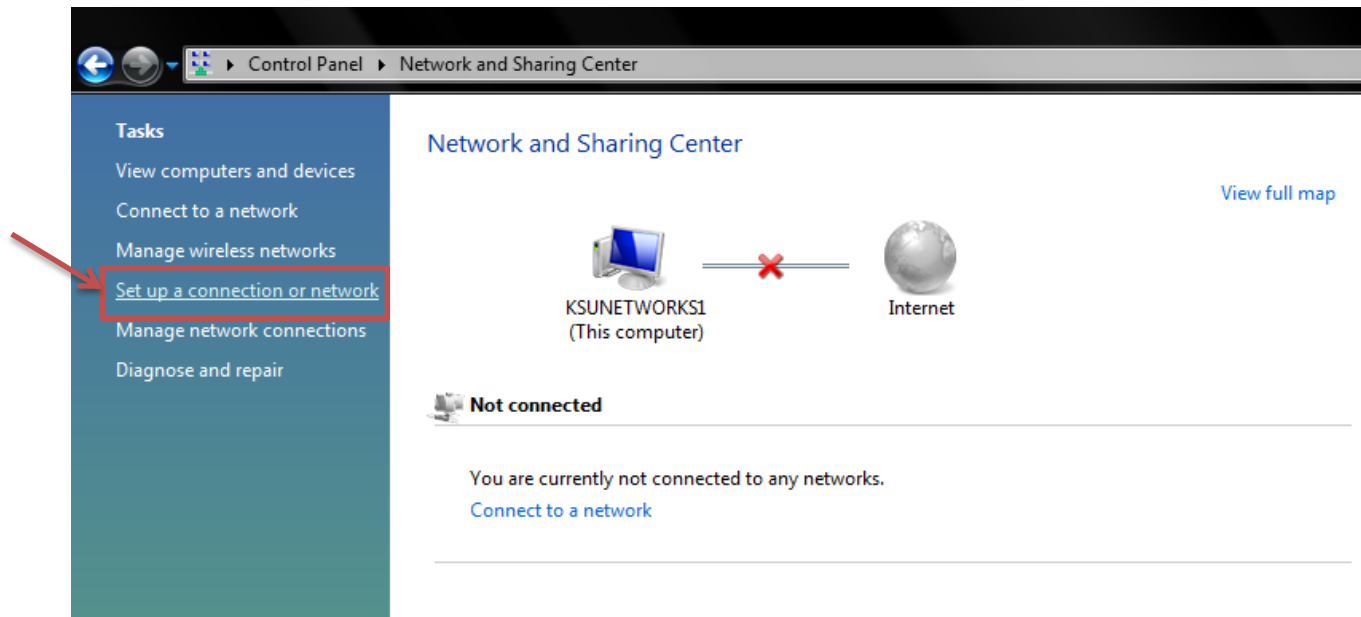


Figure 4 - Set up a connection or network

5. Click on **Manually connect to a wireless network.**

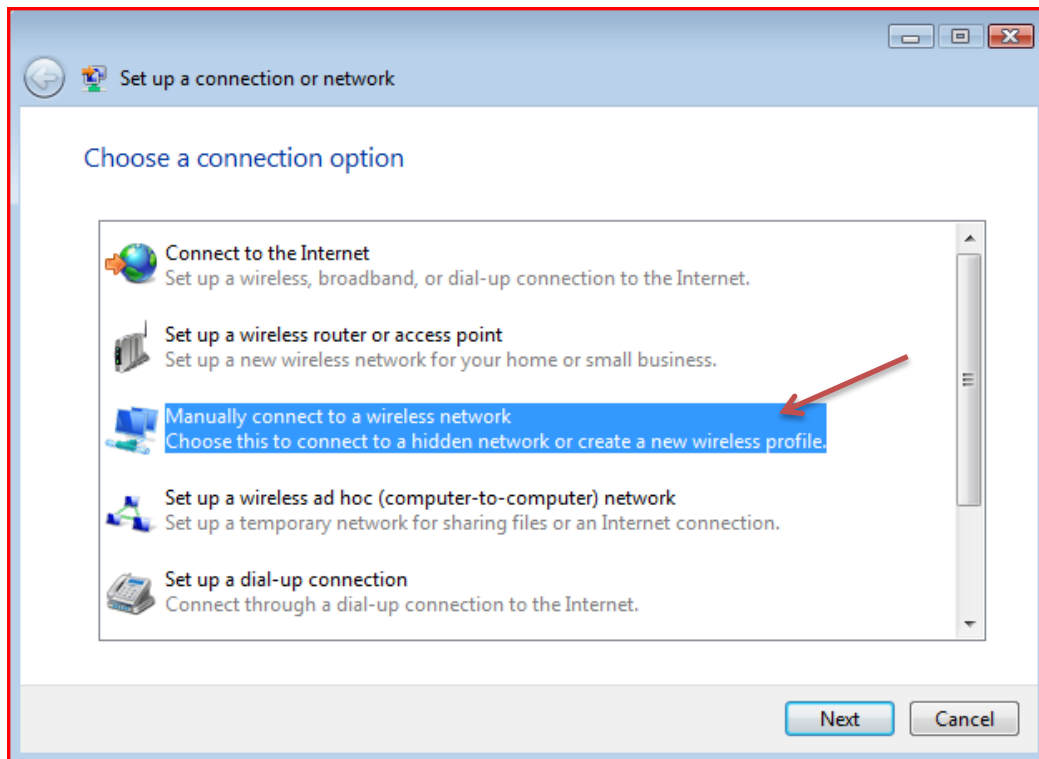


Figure 5 - Manually connect to a wireless network

6. Enter the following information:
 - a. Network name: **KSU**
 - b. Security Type: **WPA2-enterprise** (Select from drop-down list)
 - c. Encryption type: **AES** (Select from drop-down list)
 - d. Security Key/Passphrase: *Leave blank*

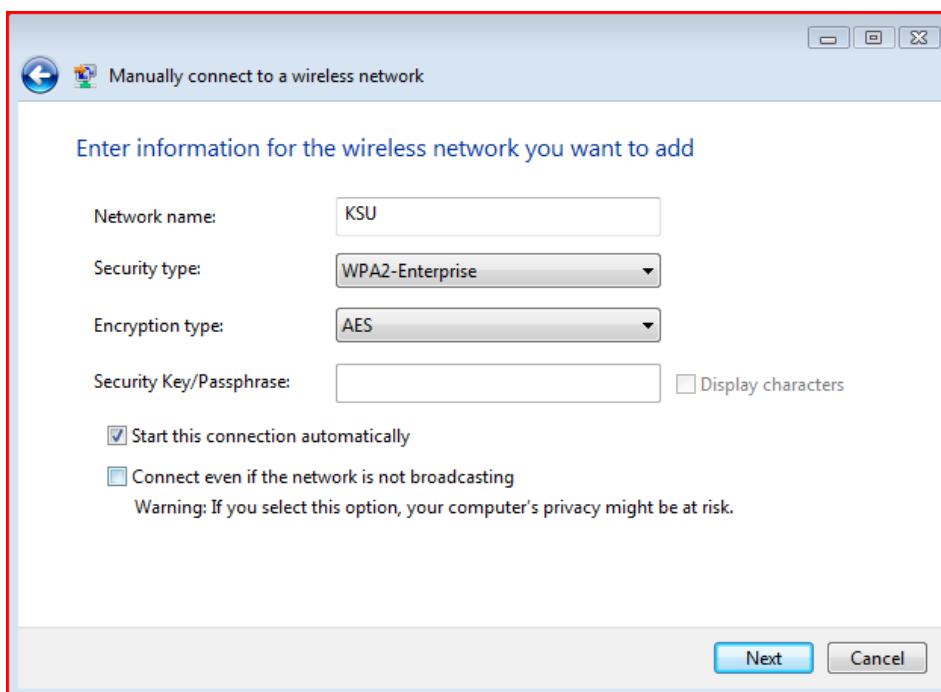


Figure 6 - Wireless Network Information

7. Click on **Next**.
8. Click on **Change connection settings**.

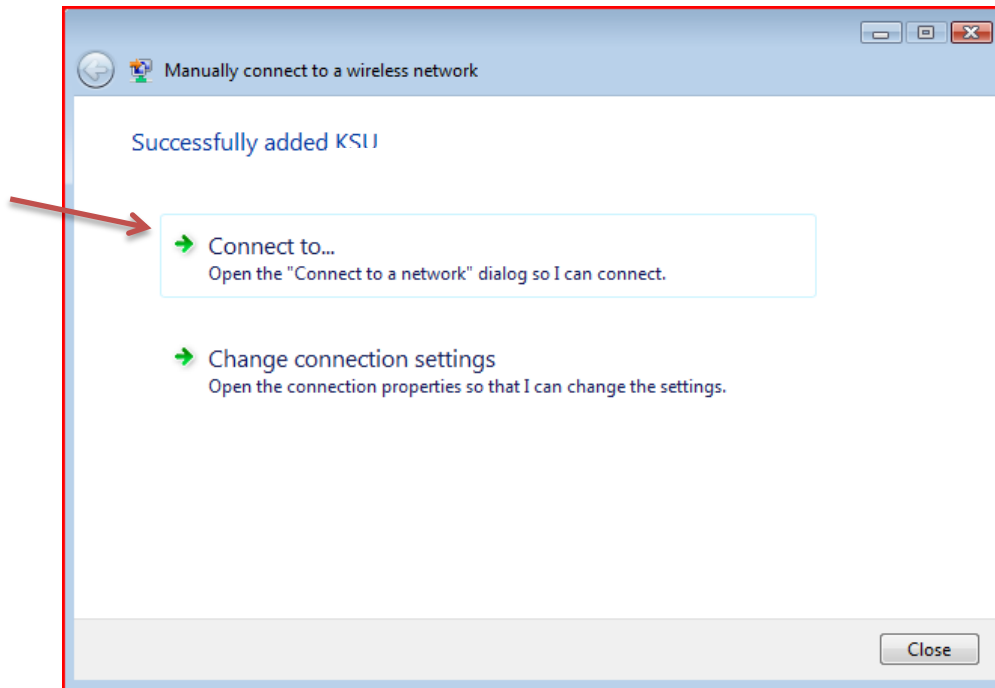


Figure 7 - Change Connection Settings

9. Click on the **Security** tab.

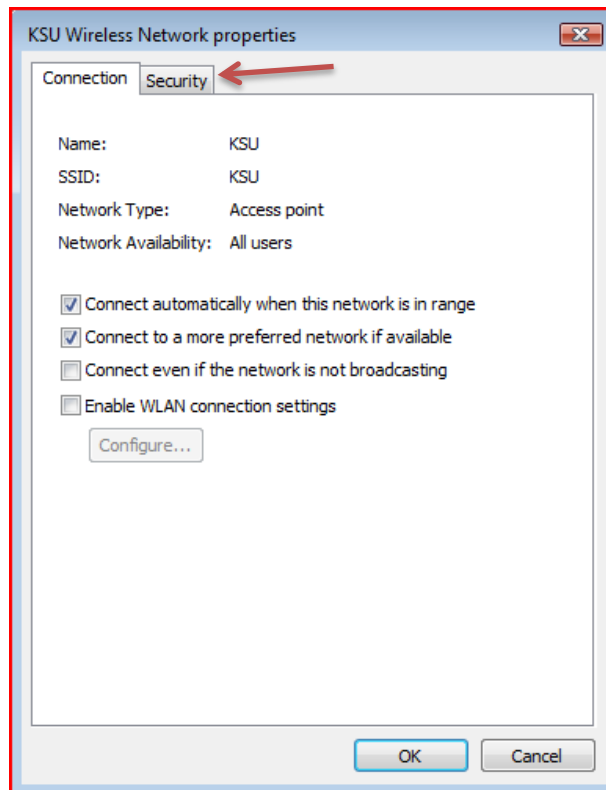


Figure 8 – Wireless Network Properties

10. Ensure that the “**Choose a network authentication method**” is set to **Microsoft: Protected EAP (PEAP)**

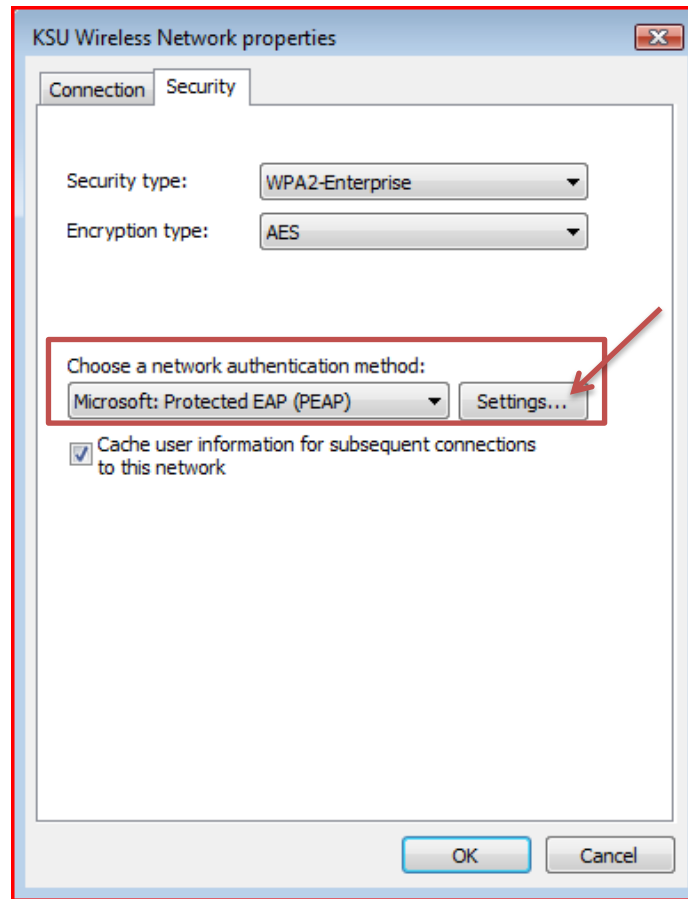


Figure 9 - Security tab

11. Click on the **Settings** button (see Figure 9).

The **Protected EAP Properties** window appears.

12. Uncheck **Validate server certificate**.

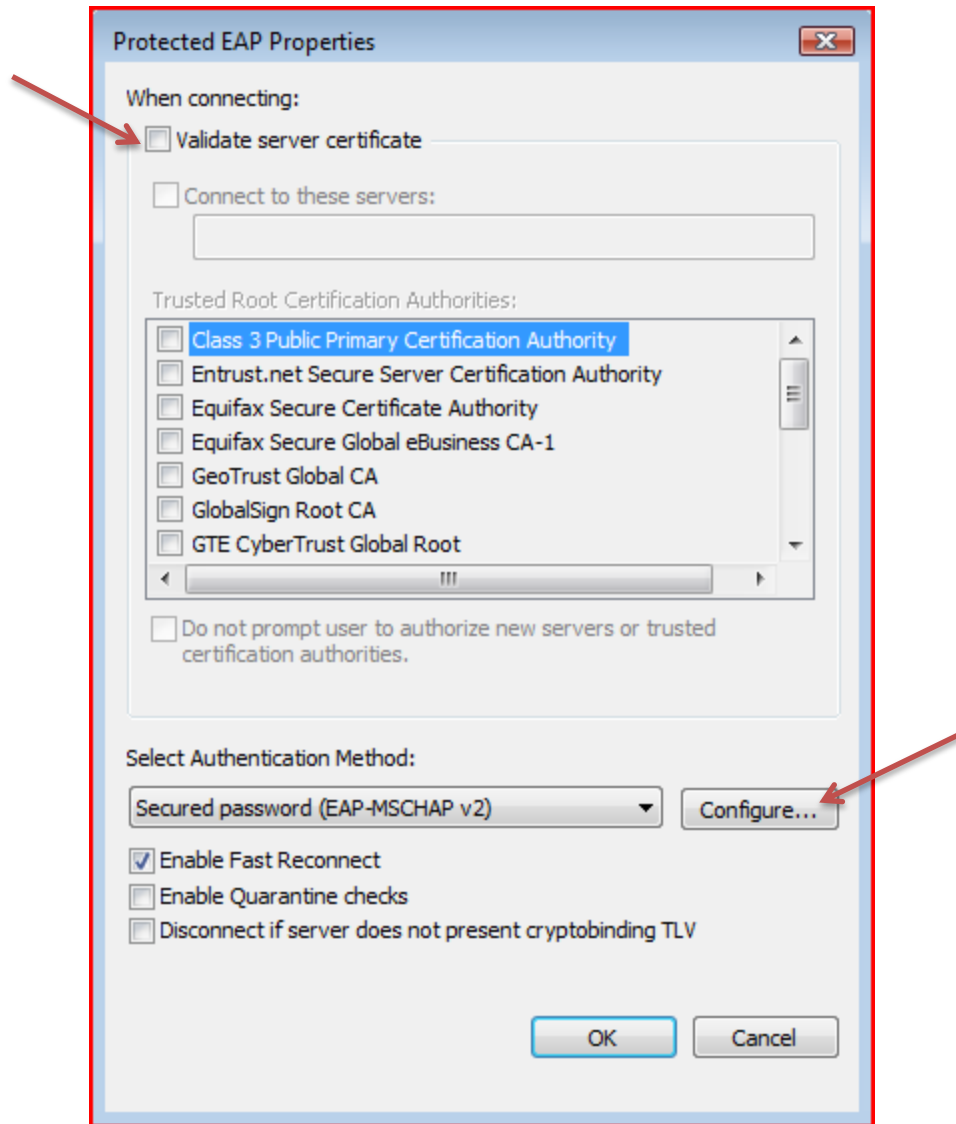


Figure 10 - Protected EAP Properties

13. Click on the **Configure** button next to **Secured password (EAP-MSCHAP v2)** (see Figure 10).
14. Uncheck the **Automatically use my Windows logon name and password** option.

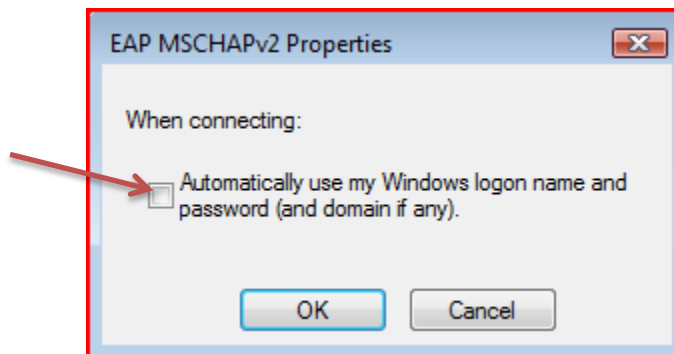


Figure 11 - EAP MSCHAPv2 Properties

15. Click on **OK** on each open window until you return to the **Manually connect to a wireless network** window.

16. Click on **Connect to...**

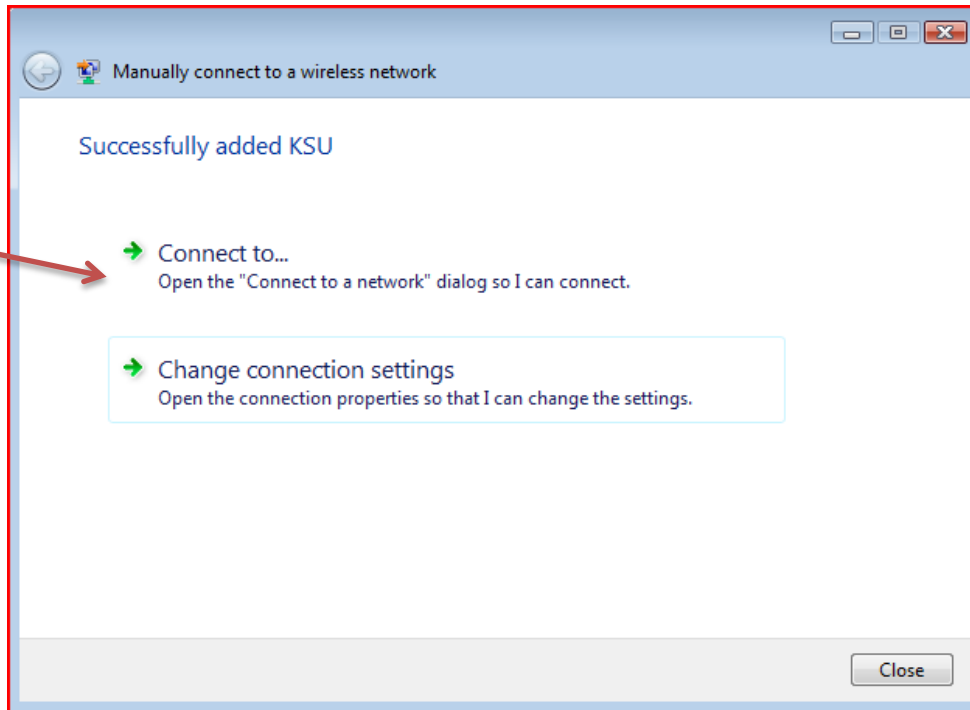


Figure 12 - Connect to...

17. Select **KSU**.

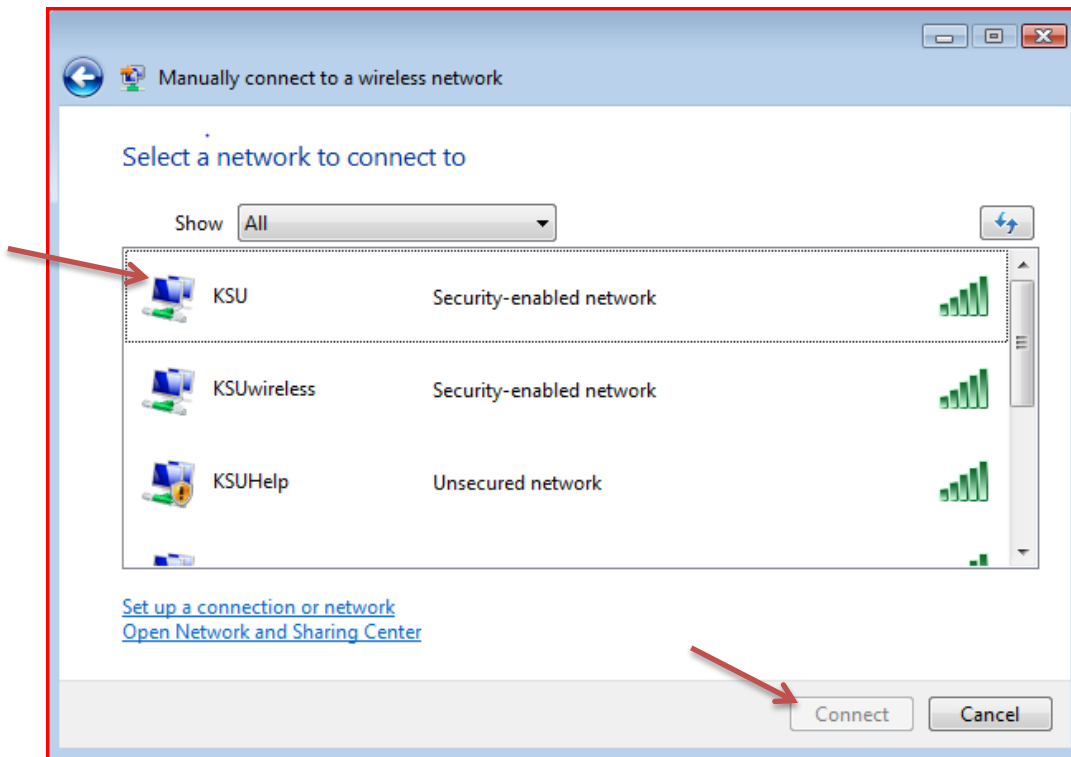


Figure 13 - KSU

18. Click on **Connect** (see Figure 13).

A prompt pop-up appears from the taskbar: **“Additional information is required to connect to KSU.”**

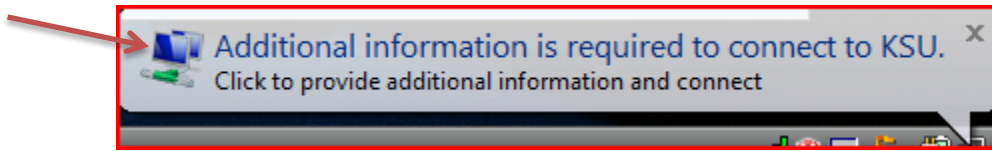


Figure 14 - Additional Log on Information

19. Click on **Additional information is required to connect to KSU.**

The **Enter Credentials** screen appears.



Figure 15 - Enter Credentials

20. Enter your **NetID, NetID password**, and leave the logon domain field blank.

21. You are now connected to the KSU wireless network.